

CHIPPING HOME GUARD (A. Company no. 4 Platoon)

A. Company Headquarters: Stonyhurst College.
Platoon Headquarters: Parish Room, Chipping.

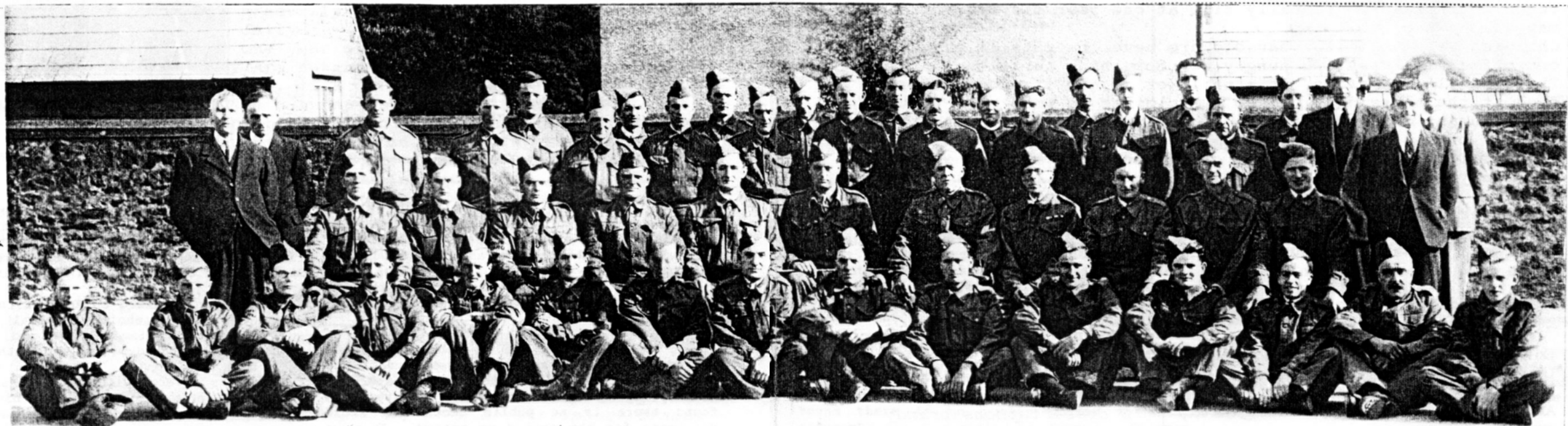
STANDING 1) Dick Baines. [Watering Trough] in suit. 2) Bob Dewhurst. [Dairy Barn] in suit. 3) Fred Seed [Knott, Little Bowland] 4) Joe Eastham. [Pale Farm] 5) J.Yates. [Ramsclough] standing behind.
LEFT TO RIGHT

6) Jim Rhodes. [Woodstraw] 7) Arthur Thornber. [Cherry Tree] standing behind. 8) Stan Harris. [Stanley Court] 9) Vic Robinson? or Alfred Leece? standing behind. 10) Neil Craig. [Black Moss Farm] 11) George Brewer. standing behind.

12) H.Milner. [Knainsley] 13) Arthur Preston. [Windy St.] standing behind. 14) Joe Goodier. [Dentist] 15) Horace Seed? [Hardacre House] or J.Seed? [Hardacre House] 16) Bert Richardson (Rich). [Windy St.]

17) Harry Lowe. [Windy St.] standing behind. 18) Cliff Holt. [Tweedys] 19) Frank Wells. [corner house Talbot St.] standing behind. 20) James Kenyon. [Knott, Thornley] 21) Ronnie Howson. [Old Hive] standing behind.

22) Richard Winder. [Throstle Nest] in suit. 23) Harry Parkinson. [Laund Farm] in suit. 24) John Smithies. [The Grove] in suit.



SEATED MIDDLE ROW 1) Bob Singleton. [Windy St.] 2) John Procter. [Bridge House] 3) Rex Hoyle. [Top shop] 4) Jack Ellison. [Meadow Top Farm] 5) Frank Raby. [Handlesteads] 6) Capt. E.A.P.Jenkins. [Wheatley Cottage]
LEFT TO RIGHT Hesketh Lane

7) Edward Wilson. [Leagram Mill] 8) C.Hemelryk. [Black Moss House] 9) Tim Procter. [Melford, Chipping] 10) Richard Wilcock. [Saunders Rake] 11) Maurice Brierley. [Birks, Thornley]

SITTING ON GROUND 1) George Mercer. [Bedlam Cottages, Thornley] 2) Harry Procter. [Thornley Hall] 3) Jack Howson. [Club Houses] 4) Harry Towers. [Chaigley] 5) ?
FRONT ROW: LEFT TO RIGHT

6) Fred Squires. [Old Hive] 7) Bill Hayhurst. [Dairy Farm] 8) Robert Hayhurst. [Church Rake] 9) Richard Whitaker. [School Lane] 10) Matt Hunter. [Fair Oak] 11) Fred Freeman. [Church Rake]

12) Dick Howson. [Club Houses] 13) Bill Knott. [Windy Harbour] 14) Tom Coupe. [Old Hive] 15) George Hartley? [saacs] or J.Metcalf? [worked at Brick House]